

ITEM NO. AND DESCRIPTION

- 1 WATER MAIN.
- 2 "MAIN SIZE" x 2" DOUBLE STRAP SADDLE TORQUED TO 30-40 FT. LBS.
- 3 LINE TAP:
WET TAP: 2" MIP x 2" POLYETHYLENE PACK JOINT FITTING WITH INTERIOR STIFFENER.
WET TAP: 2" MIP CORPORATION STOP x 2" POLYETHYLENE PACK JOINT FITTING WITH INTERIOR STIFFENER.
- 4 2" 250 PSI POLYETHYLENE METER LATERAL.
- 5 10 GAUGE SOLID COPPER TRACER WIRE. CONNECT TO TRACE WIRE ON MAIN USING 3M TYPE DBR CONNECTOR.
- 6 2" BALL CURB VALVE; FORD OR EQUAL. INSTALL USING 2" PACK JOINT FITTING WITH INTERIOR STIFFENER, OR 2" STOP AND WASTE VALVE.
- 7 10" PVC VALVE STACK (10" SDR-35 WHITE) WITH 10" ROUND IRR. BOX AND LID. FINAL SET TO FINISH GRADE. INSTALLED PLUMB OR FOR STOP AND WASTE VALVE 2" 3034 PIPE WITH TYLER STOP SECTION.
- 8 2" x 18" SS OR BRASS MIP NIPPLE.

ITEM NO. AND DESCRIPTION

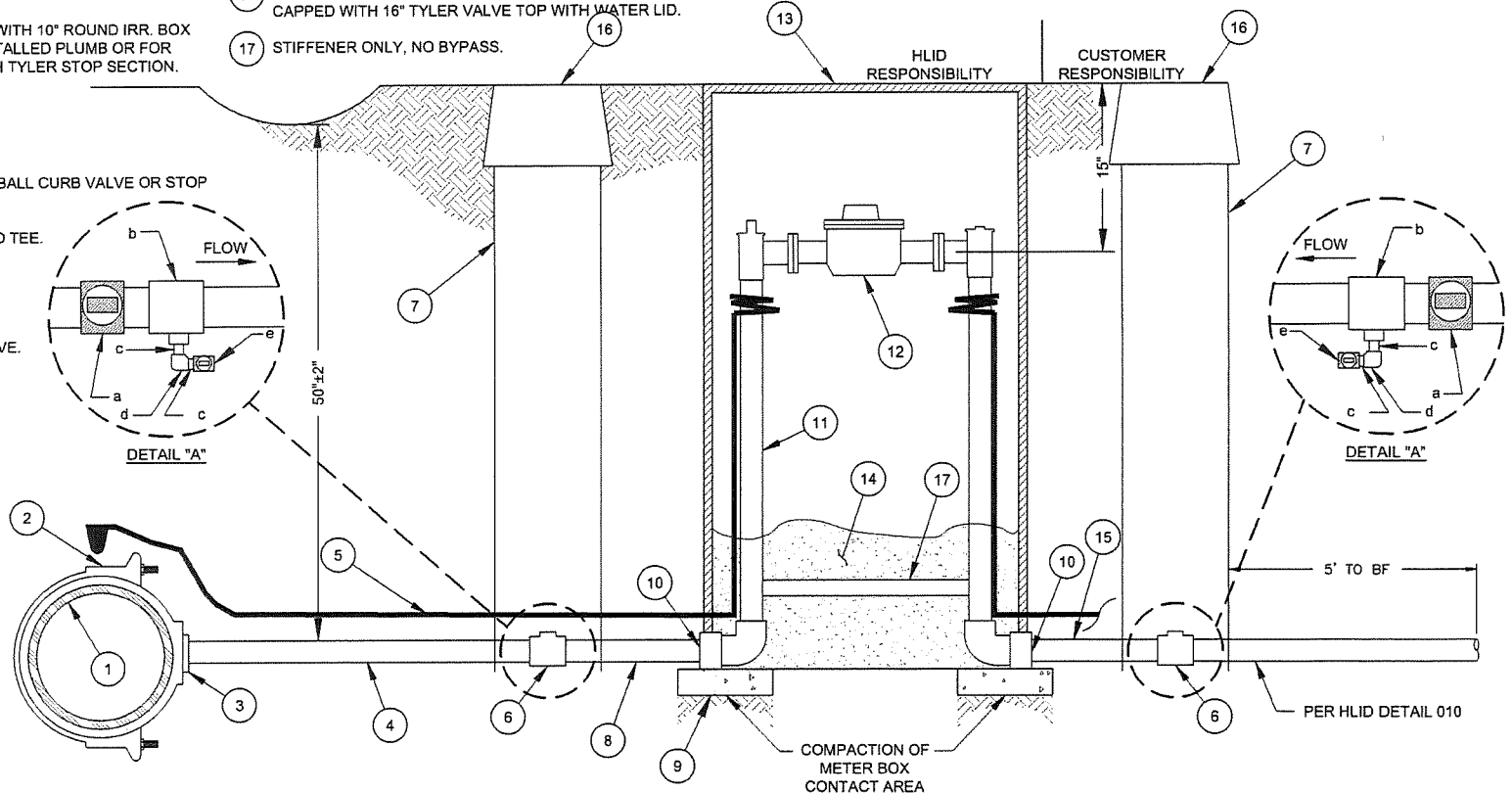
- 9 1" MIN. MASONRY BLOCK
- 10 NOT USED.
- 11 2" FORD OR MACDONALD OR APPROVED EQUAL COPPER METER SETTER FOR 4" BURY, WITH LOCKABLE ANGLE METER STOP ON INLET AND TOP ENTRY CARTRIDGE DUAL CHECK ON OUTLET.
- 12 METER - INSTALLED BY HLID.
- 13 ARMORCAST 17" X 30" 20,000 LB. RATED ONE-PIECE COVER OR EQUIVALENT.
- 14 PEA GRAVEL - INSTALL AFTER INSPECTION BY HLID.
- 15 2" SS OR BRASS PIPE SERVICE LATERAL.
- 16 10" ROUND IRRIGATION BOX WITH LID, OR 4" SDR 35 SEWER PIPE CAPPED WITH 16" TYLER VALVE TOP WITH WATER LID.
- 17 STIFFENER ONLY, NO BYPASS.

NOTES

1. 5' MINIMUM BURY FOR ALL MAINS AND SERVICES.
2. ALL LINES MUST BE APPROVED BY HLID PRIOR TO COVER.
3. TEFLON TAPE SHALL BE USED AT ALL THREADED CONNECTIONS.
4. ALL MATERIALS SHALL BE NSF 61 APPROVED. NO OR LOW LEAD FITTINGS SHALL BE USED WHERE APPLICABLE.
5. ALL MATERIALS SHALL BE TIGHTENED TO MANUFACTURERS TORQUE SPECIFICATIONS.
6. ALL INSTALLATION SHALL BE TRUE, STRAIGHT, PLUMB AND CENTERED.
7. ALL MATERIALS MUST BE NSF 61 CERTIFIED AND LEAD FREE OR LOW LEAD WHERE APPLICABLE.
8. ALL COMMERCIAL/ LIGHT INDUSTRIAL SERVICE CONNECTIONS MUST BE PROTECTED BY A REDUCED PRESSURE ZONE PRINCIPLE BACK FLOW ASSEMBLY (RP) INSTALLED DOWNSTREAM OF THE METER SETTER. NO UNPROTECTED CONNECTIONS WILL BE MADE BETWEEN THE METER AND RP.

DETAIL "A" NOTES:

- a. 2" FORD OR EQUAL BALL CURB VALVE OR STOP AND WASTE VALVE.
- b. 2" x 3/4" GALVANIZED TEE.
- c. 3/4" CLOSE NIPPLE.
- d. 3/4" 90° BEND.
- e. 3/4" BALL CURB VALVE.



REVISIONS	
DATE	DESCRIPTION



HAYDEN LAKE IRRIGATION DISTRICT		HLID DETAIL #: 011
IRRIGATION UNDERGROUND METER SET		SCALE: NONE
DWG: 011 - IRR_METER_SET(11-2020).dwg		DATE: July, 2022
		APPROVED: BR