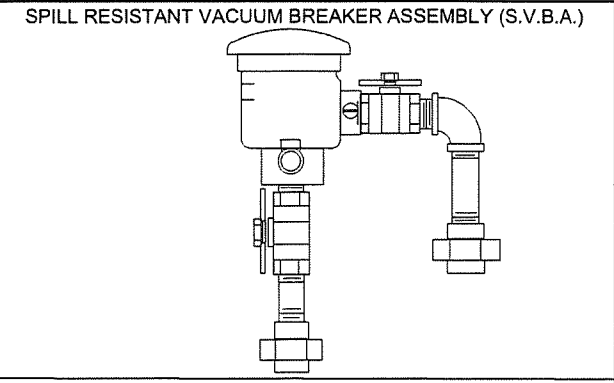
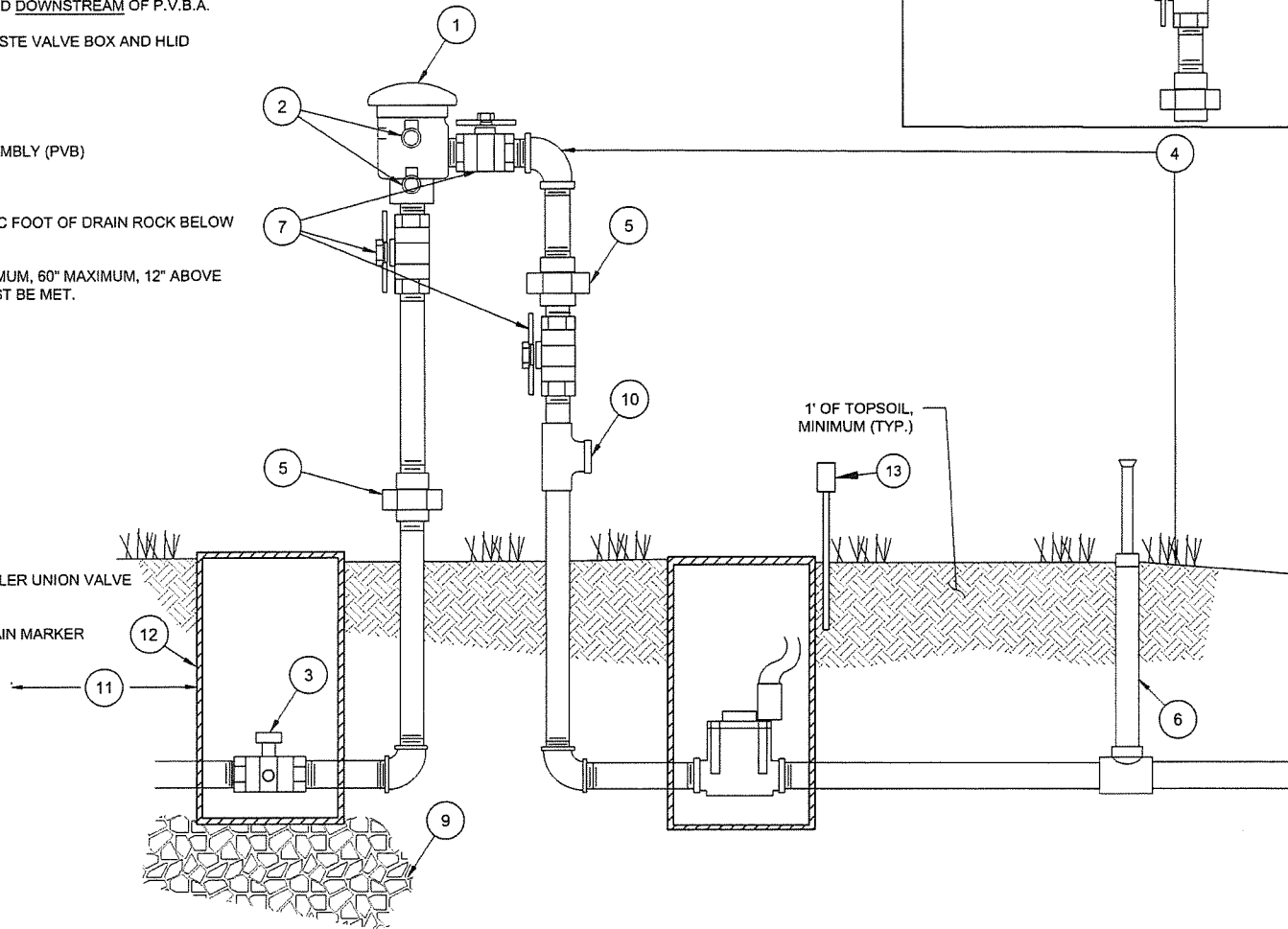


**GENERAL NOTES:**

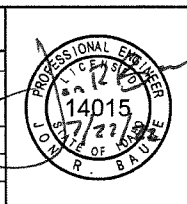
1. NO BLOW OFF PORTS ARE ALLOWED UPSTREAM OR DOWNSTREAM OF THE PVB ASSEMBLY. THE ASSEMBLY MUST BE REMOVED FROM THE SYSTEM PRIOR TO BLOWING OUT THE IRRIGATION SYSTEM.
2. MANUAL OR AUTOMATIC VALVES ALLOWED DOWNSTREAM OF PVB.
3. MAY BE PRESSURIZED FOR MORE THAN 12 HOURS IN A 24 HOUR PERIOD.
4. ELECTRIC VALVES/STATION ALLOWED DOWNSTREAM OF P.V.B.A.
5. 5' MINIMUM BETWEEN STOP AND WASTE VALVE BOX AND HLID METER.

**KEYED NOTES:**

- 1 PRESSURE VACUUM BREAKER ASSEMBLY (PVB)
- 2 TEST COCKS.
- 3 STOP AND WASTE VALVE. ONE CUBIC FOOT OF DRAIN ROCK BELOW THE STOP AND WASTE VALVE.
- 4 ELEVATION REQUIREMENT: 12" MINIMUM, 60" MAXIMUM, 12" ABOVE THE HIGHEST POINT IN SYSTEM MUST BE MET.
- 5 UNIONS MANDATORY.
- 6 SPRINKLER HEAD.
- 7 BALL VALVE.
- 8 BLOW OUT PORT.
- 9 DRAIN ROCK.
- 10 TEE WITH 3/4" NPT, WITH CAP
- 11 5' MINIMUM TO HLID METER PIT.
- 12 4" SDR 3034 VERTICAL PIPE WITH TYLER UNION VALVE BOX AND WATER LID.
- 13 CAUTION UNDERGROUND WATERMAIN MARKER IN "BLUE".



REVISIONS	
DATE	DESCRIPTION



<b>HAYDEN LAKE IRRIGATION DISTRICT</b>		HLID DETAIL #: <b>010</b>
<b>PRESSURE VACUUM BREAKER ASSEMBLY</b>		DATE: July, 2022
SCALE: NONE	APPROVED: BR	
DWG: 010 - PVB (11-2019).dwg		