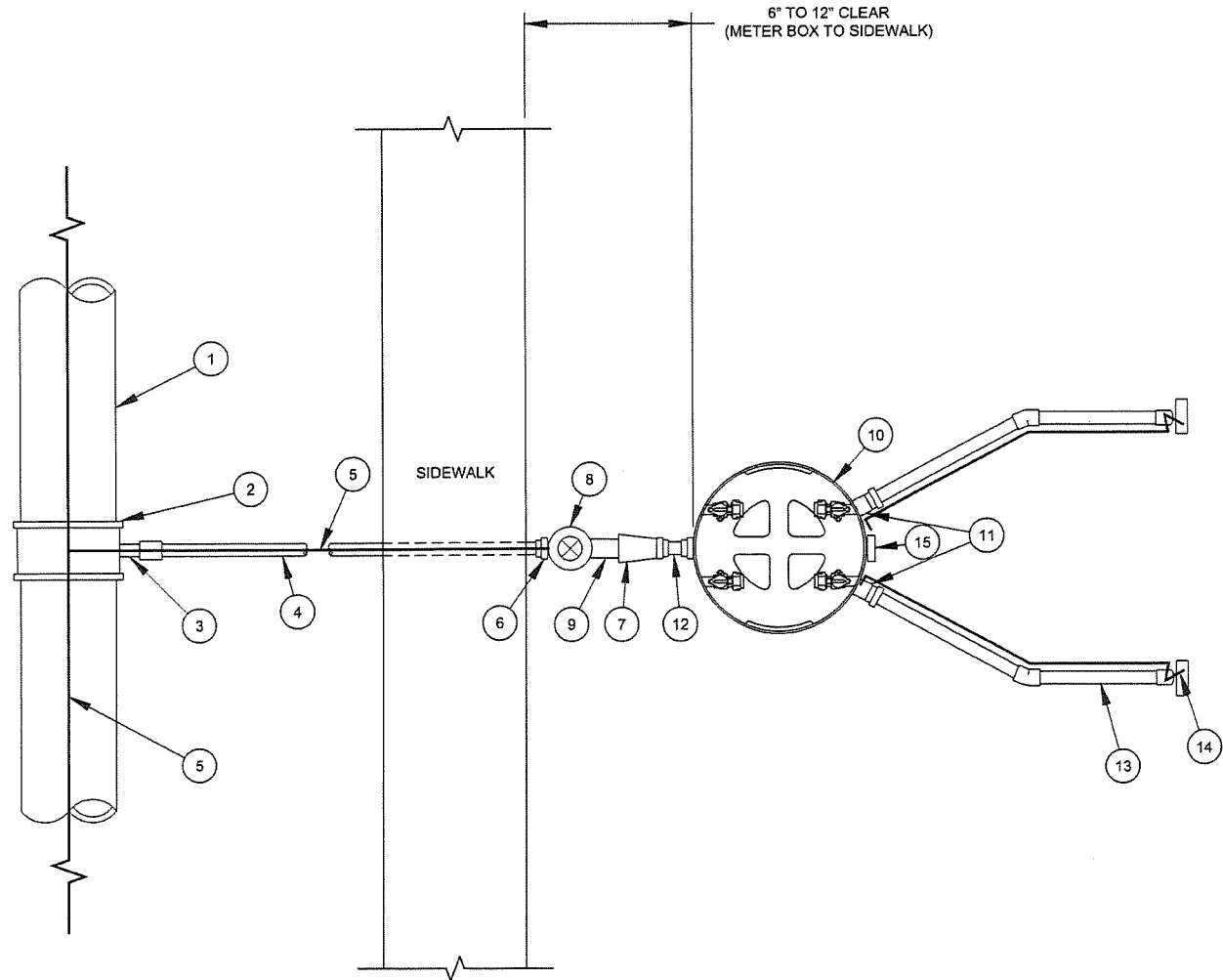


NOTES

1. 5' MINIMUM BURY FOR ALL MAINS AND SERVICES.
2. ALL LINES MUST BE APPROVED BY HLID PRIOR TO COVER.
3. TEFLON TAPE SHALL BE USED AT ALL THREADED CONNECTIONS.
4. ALL MATERIALS SHALL BE NSF 61 APPROVED. NO OR LOW LEAD FITTINGS SHALL BE USED WHERE APPLICABLE.
5. ALL MATERIALS SHALL BE TIGHTENED TO MANUFACTURERS TORQUE SPECIFICATIONS.
6. ALL INSTALLATION SHALL BE TRUE, STRAIGHT, PLUMB AND CENTERED.
7. BEDDING SAND AS PER DETAIL 001.

ITEM NO. AND DESCRIPTION

- 1 WATER MAIN PER HLID APPROVED PLANS AND IDAHO STANDARDS FOR PUBLIC WORKS CONSTRUCTION.
- 2 "SIZE OF MAIN" X 1.5" OR 2" DOUBLE STRAP SADDLE.
- 3 LINE TAP:
 - a. WET TAP: 1-1/2" X 2" POLYETHYLENE PACK JOINT FITTING WITH INTERIOR STIFFENER.
- 4 1-1/2" OR 2" 250 PSI POLYETHYLENE METER LATERAL.
- 5 10 GAUGE SOLID COPPER TRACER WIRE. SPLICE TO TRACE WIRE ON MAIN USING 3M TYPE DBR OR DRYCONN DBSR SPLICE KIT. RUN TRACE WIRE TO NORTH OR WEST METER ONLY.
- 6 MALE 1-1/2" OR 2" PAC WITH STIFFENER.
- 7 BELL REDUCER 1-1/2" OR 2" X 1" FOLLOWED WITH 12" POLY NIPPLE, 1" F. PAC WITH STIFFENER.
- 8 1-1/2" OR 2" BALL CURB STOP: A.Y. MCDONALD, FORD OR HLID APPROVED EQUIVALENT.
 - a. CURB BOX TO BE 4" SDR 35 PVC STACK: INSTALLED PLUMB AND EXTENDED ABOVE GROUND WITH CAP. AFTER FINAL INSPECTION AND PRESSURE TEST FINISH CURB STACK TO GRADE. CAP WITH 4" VALVE STACK WITH TYLER FOUNDING TOP SECTION AND LID SET TO FINISH GRADE.
- 9 1-1/2" BRASS NIPPLE, 1-1/2" X 4" MINIMUM NIPPLE OR STAINLESS STEEL.
- 10 A.Y. MCDONALD'S 796 SERIES TOP ADJUSTABLE COIL METER PIT OR MUELLER ADJUSTABLE EQUIVALENT METER COIL PIT AS APPROVED BY HLID.
- 11 3/4" FEMALE PAC JOINT.
- 12 1" M. PAC WITH STIFFENER X 12" MINIMUM 1" POLY PIPE X 1" F. PAC.
- 13 CUSTOMER SERVICE LATERAL. INSTALL PER PLUMBING CODE. STUB PAST DRY UTILITY EASEMENT. TERMINATE WITH 3/4" PVC THREADED CAP OR 3/4" MALE INSTALLED HAND TIGHT.
- 14 2" X 4" MARKER PAINTED BLUE. EXTEND 12" ABOVE SIDEWALK GRADE.
- 15 CAUTION UNDERGROUND WATERMAIN MARKER IN "BLUE".



REVISIONS			HAYDEN LAKE IRRIGATION DISTRICT	
DATE	DESCRIPTION		DUAL RESIDENTIAL METER SET PLAN VIEW	HLID DETAIL #: 003A
			SCALE: NONE	DATE: July, 2022
			DWG: 003A - DUAL_SET(11-2019).dwg	APPROVED: BR