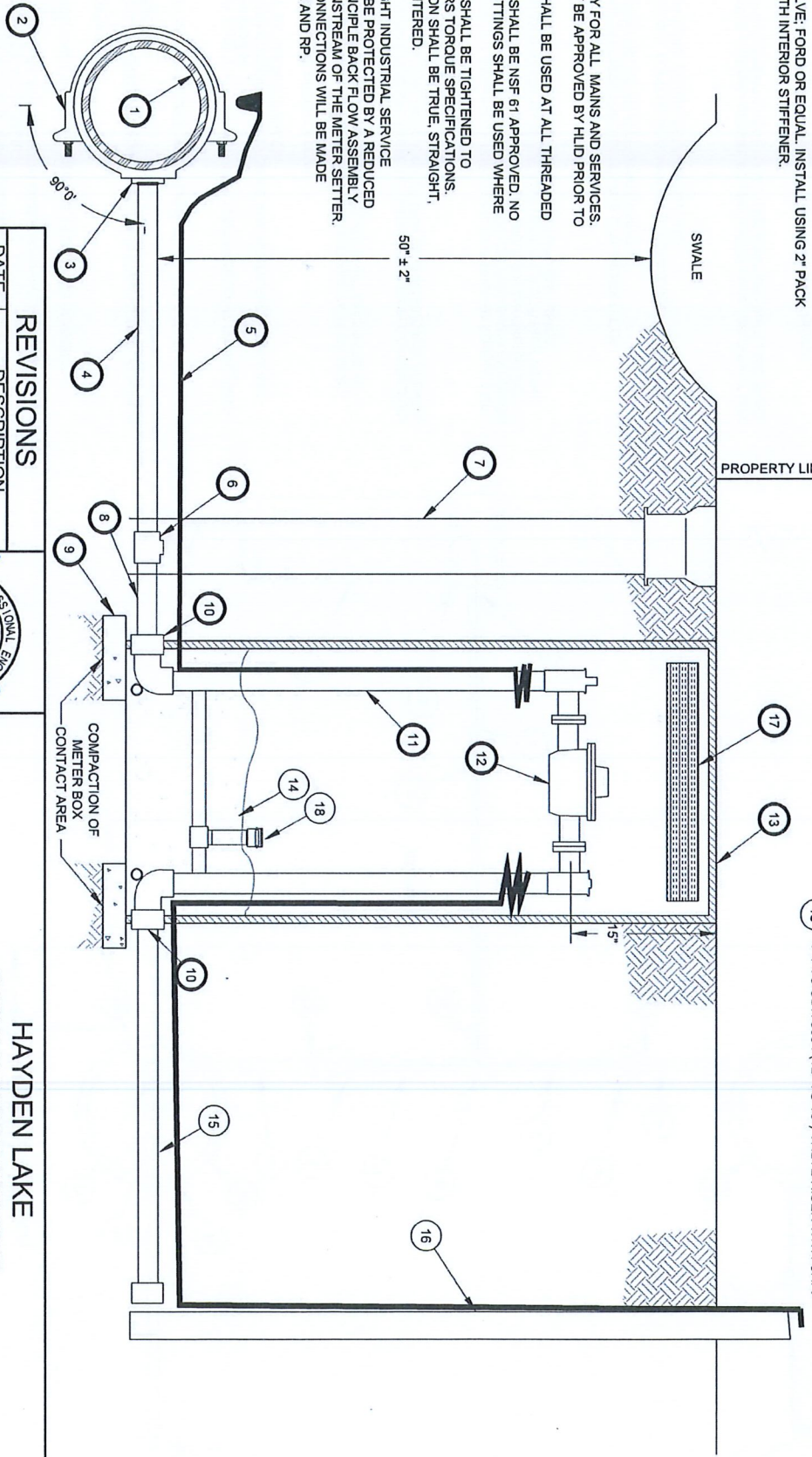


- | ITEM NO. AND DESCRIPTION | ITEM NO. AND DESCRIPTION | ITEM NO. AND DESCRIPTION |
|--|--|---|
| 1 WATER MAIN. | 7 4" PVC VALVE STACK (4" SDR-35 WHITE) WITH TYLER FOUNDRY TOP SECTION AND LID. FINAL SET TO FINISH GRADE. INSTALL PLUMB. | 13 BROOKS #67 OR FOGTITE #3 METER BOXES INSTALLED WITH TRAFFIC RATED LID WITH METER READING DOOR. INSTALLED PLUMB AND CENTERED ON METER SETTER. |
| 2 SIZE OF MAIN" x 2" DOUBLE STRAP SADDLE TORQUED TO 30-40 FT. LBS. | 8 2" x 18" GALVANIZED NIPPLE. | 14 PEA GRAVEL - INSTALL AFTER INSPECTION BY H.L.D. |
| 3 LINE TAP: WET TAP- 2" MIP x 2" POLYETHYLENE PACK JOINT FITTING WITH INTERIOR STIFFENER. WET TAP- 2" MIP CORPORATION STOP x 2" POLYETHYLENE PACK JOINT FITTING WITH INTERIOR STIFFENER. | 9 1" MIN. MASONRY BLOCKS. | 15 2" GALVANIZED PIPE SERVICE LATERAL - INSTALL TO PROPERTY SIDE OF UTILITY EASEMENT TERMINATE WITH 2" PVC THREADED CAP INSTALLED HAND TIGHT. MINIMUM 5 FEET. |
| 4 2" 250 PSI POLYETHYLENE METER LATERAL. | 10 2" BRASS UNION. | 16 6" LONG 2" x 4" WOOD MARKER. PAINT TOP 6" BLUE. INSTALL PLUMB ON END OF SERVICE LATERAL. |
| 5 10 GAUGE SOLID COPPER TRACER WIRE. SPLICE TO TRACE WIRE ON MAIN USING 3/16" TYPE DBR OR DRYCONN DBSR SPLICE KIT. | 11 2" FORD OR MACDONALD OR APPROVED EQUAL COPPER METER SETTER FOR 4" BURY. WITH LOCKABLE ANGLE METER STOP ON INLET AND TOP ENTRY CARTRIDGE DUAL CHECK ON OUTLET. | 17 2" INSULATION FOAM BOARD. |
| 6 2" BALL CURB VALVE. FORD OR EQUAL. INSTALL USING 2" PACK JOINT FITTING WITH INTERIOR STIFFENER. | 12 METERS - INSTALLED BY H.L.D. | 18 4" PVC SDR 3034 (1/2" TO 1 8/16") VALVE RISER WITH CAP. |

NOTES

- 5 MINIMUM BURY FOR ALL MAINS AND SERVICES.
 - ALL LINES MUST BE APPROVED BY H.L.D PRIOR TO COVER.
 - TEFLON TAPE SHALL BE USED AT ALL THREADED CONNECTIONS.
 - ALL MATERIALS SHALL BE NSF 61 APPROVED. NO OR LOW LEAD FITTINGS SHALL BE USED WHERE APPLICABLE.
 - ALL MATERIALS SHALL BE TIGHTENED TO MANUFACTURERS TORQUE SPECIFICATIONS.
 - ALL INSTALLATION SHALL BE TRUE, STRAIGHT, PLUMB AND CENTERED.
- ALL COMMERCIAL/LIGHT INDUSTRIAL SERVICE CONNECTIONS MUST BE PROTECTED BY A REDUCED PRESSURE ZONE PRINCIPLE BACK FLOW ASSEMBLY (RP) INSTALLED DOWNSTREAM OF THE METER SETTER. NO UNPROTECTED CONNECTIONS WILL BE MADE BETWEEN THE METER AND RP.



REVISIONS

| DATE | DESCRIPTION |
|------|-------------|
| | |
| | |
| | |
| | |



HAYDEN LAKE
IRRIGATION DISTRICT

2" COMMERCIAL METER SET

SCALE: NONE
DWG: 002 - COM. METER SET (11-2019).dwg

DATE: April, 2020
APPROVED: BR

H.L.D DETAIL #:
002