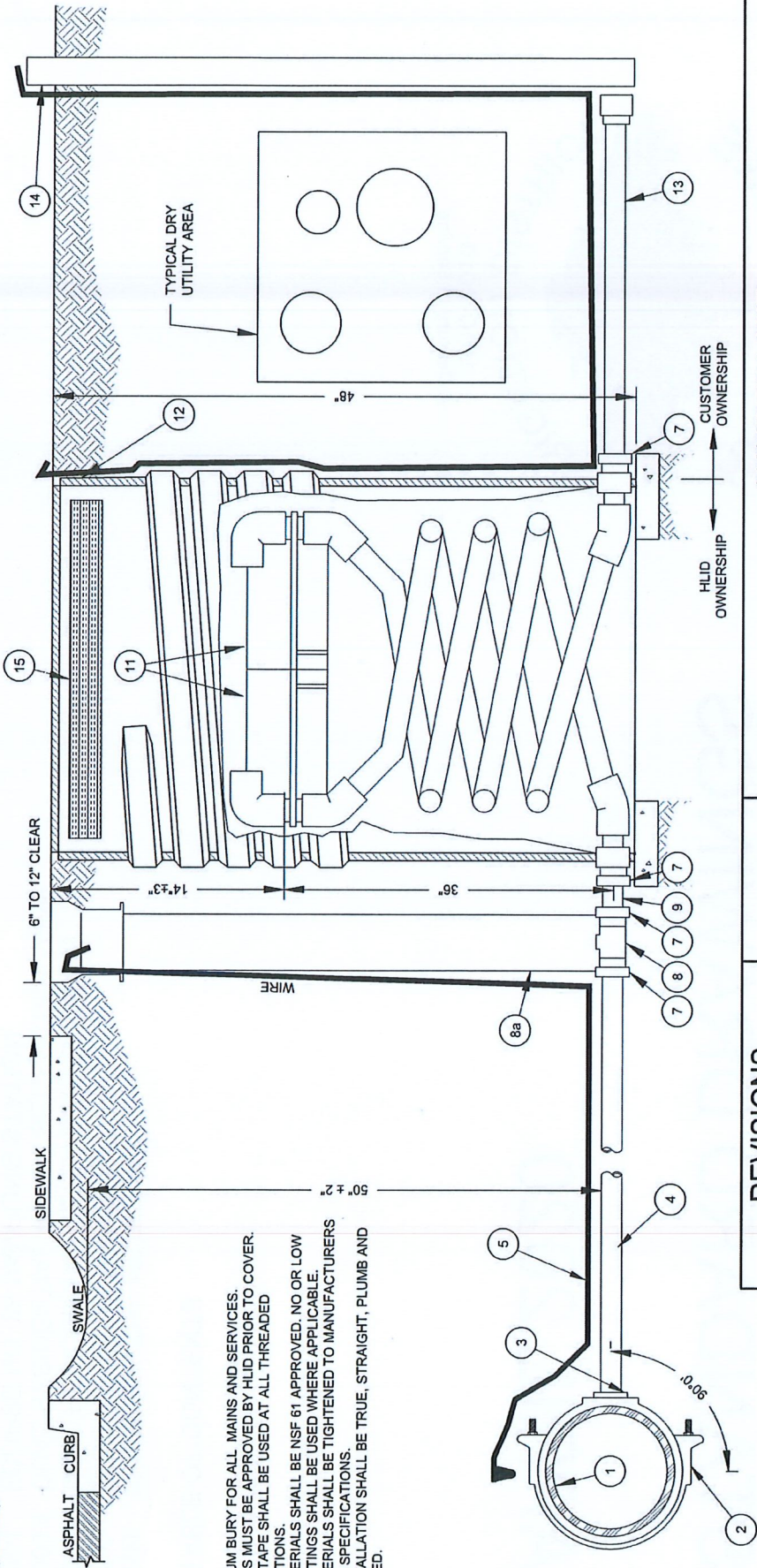


ITEM NO. AND DESCRIPTION

- 1 WATER MAIN PER HLD APPROVED PLANS AND IDAHO STANDARDS FOR PUBLIC WORKS CONSTRUCTION.
- 2 "SIZE OF MAIN" X 1" DOUBLE STRAP SADDLE TORQUE TO 30-40 FT LBS.
- 3 LINE TAP:
a. WET TAP: 1" MIP CORPORATION STOP X 1" POLYETHYLENE PACK JOINT FITTING WITH INTERIOR STIFFENER.
- 4 1" 250 PSI POLYETHYLENE METER LATERAL.
- 5 10 GAUGE SOLID COPPER TRACER WIRE. SPLICE TO TRACE WIRE ON MAIN USING 3M TYPE DBR OR DRYCONN DBSR SPLICE KIT.
- 6 PAC JOINT (MALE).
- 7 PAC JOINT (FEMALE).
- 8 1" BALL CURB STOP: A.Y. MCDONALD, FORD OR HLD APPROVED EQUIVALENT. INSTALL USING 1" PACK JOINT FITTING WITH INTERIOR STIFFENER.
a. CURB BOX TO BE 4" SDR 35 PVC STACK: INSTALLED PLUMB AND EXTENDED ABOVE GROUND WITH CAP. AFTER FINAL INSPECTION AND PRESSURE TEST FINISH CURB STACK WITH TYLER FOUNDRY TOP SECTION AND LID, FINAL SET TO FINISH GRADE. INSTALL PLUMB.
b. IF VALVE STACK IS TO BE PLACED IN TRAFFIC AREA THEN ROAD RATED MATERIALS MUST BE USED AS SPECIFIED: TYLER FOUNDRY TOP SECTION AND LID. SET TOP LEVEL TO 1/2" BELOW FINISH GRADE. TRAFFIC AREAS WILL BE DETERMINED BY HLD.
- 9 1" X 18" BRASS OR STAINLESS STEEL
- 10 36" X 1" ROAD RATED A.Y. MCDONALD COIL PIT METER SETTER WITH ADJUSTABLE TOP. NO OR LOW LEAD METER SETTER WITH TOP ENTRY DUAL CHECK VALVE.
- 11 1" X 3/4" A.Y. MCDONALD, FORD OR HLD APPROVED EQUIVALENT NO OR LOW LEAD METER ADAPTORS. METER INSTALLED BY HLD.
- 12 A.Y. MCDONALD'S 795 SERIES TOP ADJUSTABLE COIL METER PIT OR EQUIVALENT METER COIL PIT AS APPROVED BY HLD.
- 13 CUSTOMER SERVICE LATERAL. INSTALL POLY PIPE PER PLUMBING CODE. STUB PAST DRY UTILITY EASEMENT. TERMINATE WITH PAC JOINT (F) WITH BRASS PLUG. MINIMUM 5- FEET BEYOND DRY UTILITIES.
- 14 2" X 4" MARKER PAINTED BLUE. EXTEND 12" ABOVE SIDEWALK GRADE.
- 15 2" INSULATION FOAM BOARD.

NOTES

- 1. 5' MINIMUM BURY FOR ALL MAINS AND SERVICES.
- 2. ALL LINES MUST BE APPROVED BY HLD PRIOR TO COVER.
- 3. TEFLON TAPE SHALL BE USED AT ALL THREADED CONNECTIONS.
- 4. ALL MATERIALS SHALL BE NSF 61 APPROVED. NO OR LOW LEAD FITTINGS SHALL BE USED WHERE APPLICABLE.
- 5. ALL MATERIALS SHALL BE TIGHTENED TO MANUFACTURERS TORQUE SPECIFICATIONS.
- 6. ALL INSTALLATION SHALL BE TRUE, STRAIGHT, PLUMB AND CENTERED.



REVISIONS	
DATE	DESCRIPTION



**HAYDEN LAKE
IRRIGATION DISTRICT**

1" SINGLE RESIDENTIAL METER SET

HLD DETAIL #:
001

SCALE: NONE
 DWG: 001 - RESID_METER_SET(11-2019).dwg
 DATE: April, 2020
 APPROVED: BR